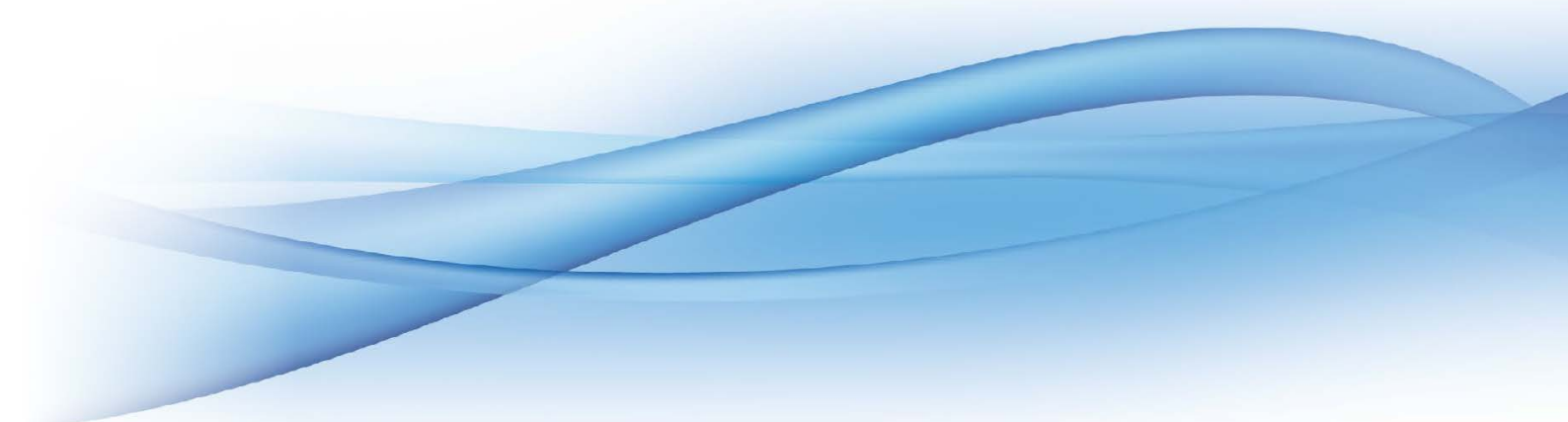




LASAK BioniQ 3Shape libraries

Download and Installation



LASAK BioniQ 3Shape libraries

LASAK BioniQ libraries

The libraries contain complete data for the LASAK BioniQ implant system, such as STL files for implant platforms (indexed, non-indexed, bridge), Ti base platforms (LASAK CadCam abutments), Screw-On abutments and Premill abutments. The libraries further contain STL files of scanbodies and additional necessary configuration data.

For the BioniQ implant system, a [PDF file containing a diagram of the whole library](#) is also available for better orientation when choosing a particular solution for a milled framework.

1 Download the library files

LASAK BioniQ implant system libraries are free to download at [LASAK website](#).

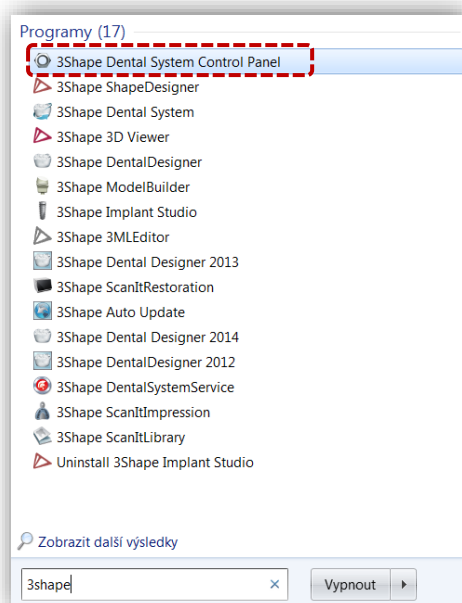
Particularly, there are the latest versions of “*LASAK_BioniQ_(Ti base).dme*”, “*LASAK_BioniQ_(one piece).dme*” and “*LASAK_BioniQ_(Premill).dme*” files.

Please save all of the files to a preferred 3Shape folder of your computer

Note:

It is not possible to generate the milling output for the “*LASAK_BioniQ_(one piece).dme*” library outside of the LASAK CadCam Center. Implant-anchored frameworks can be milled only at the LASAK CadCam Center. The “*LASAK_BioniQ_(Ti base).dme*” and “*LASAK_BioniQ_(Premill).dme*” libraries contain freely accessible fully-functional models. Frameworks anchored to Ti base or Screw-On and Premill abutments can be milled also outside the LASAK CadCam Center.

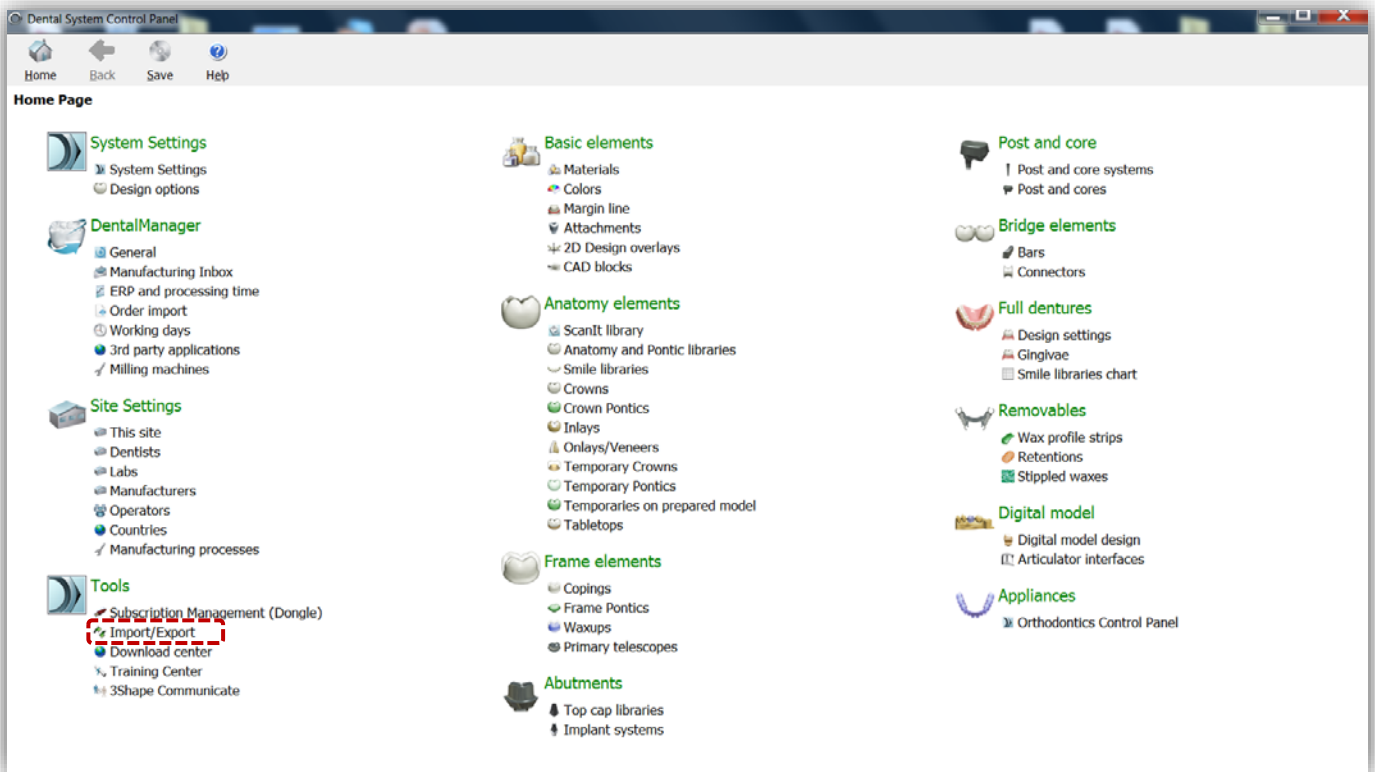
2 Launch the 3Shape Dental System Control Panel



LASAK BioniQ 3Shape libraries

3 Import the downloaded libraries

In the "Tools" menu, please click on the "Import/Export" tab.

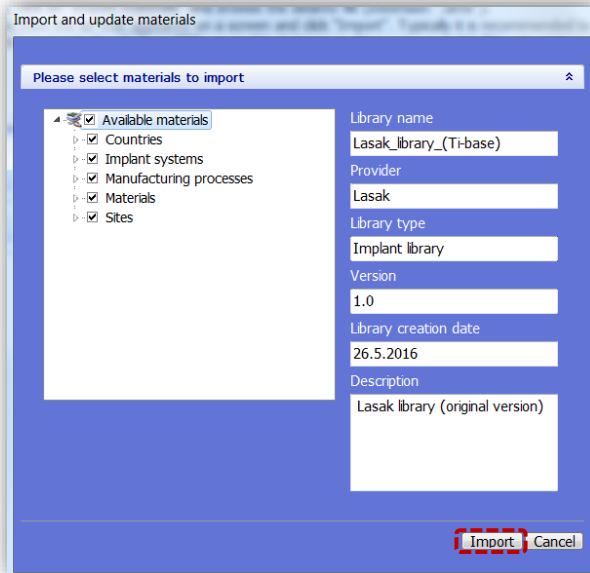


Click on the "Import materials" tab.



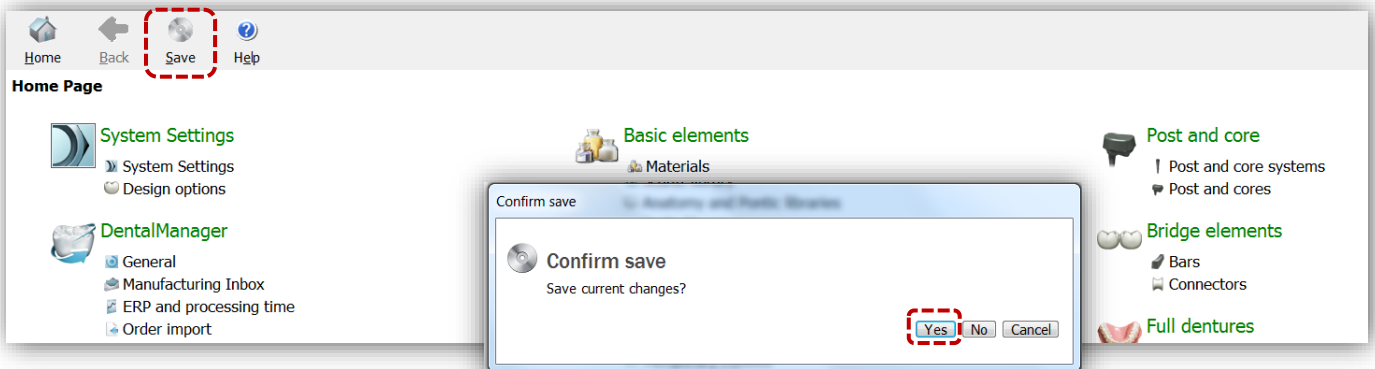
LASAK BioniQ 3Shape libraries

Select the “*LASAK_BioniQ_(Ti base).dme*”, “*LASAK_BioniQ_(one piece).dme*” and “*LASAK_BioniQ_(Premill).dme*” downloaded files and import them by clicking “*Import*”.



4 Save

After importing all the libraries, click “*Save*” in the upper part of the window. Confirm by clicking “*Yes*”



LASAK BioniQ 3Shape libraries

5 The libraries are ready to use

Following the import, the libraries are available at “*Manufacturers*” and “*Manufacturing Processes*” in the “*Site Settings*” section of the menu.

